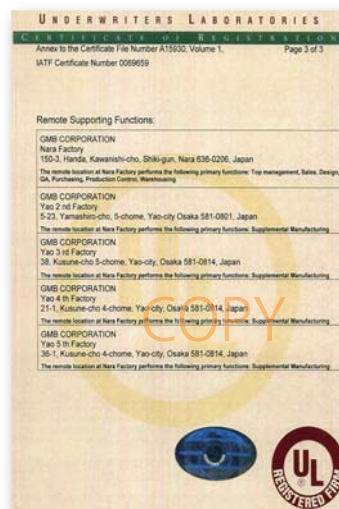
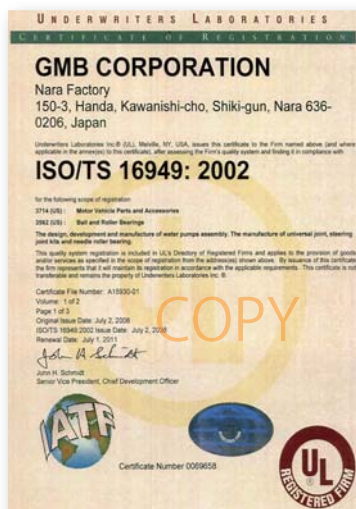




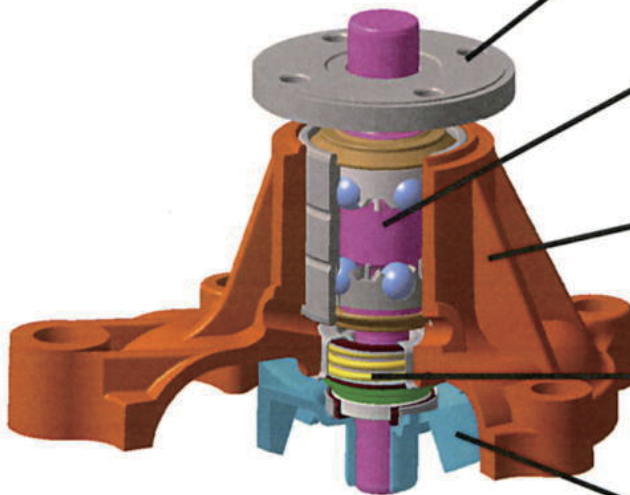
### FEATURE OF PRODUCTS

- GMB products are designed under the trade mark “Global Management Business”.
  - . HIGH QUALITY PRODUCTS
  - . QUICK DELIVERY
  - . COMPETITIVE PRICE
  - . BEST SERVICE
- GMB is certified ISO/TS 16949: 2002, which is international quality management system for the design, development and manufacture of Water Pump Assemblies, Universal Joints, Steering Joint Kits and Needle Roller Bearings.



# Structure and batch traceability of GMB Water pump

## STRUCTURE



### FLANGE(HUB)

Pulley and/or fan clutch are mounted onto the flange.



### SHAFT BEARING

There are Bal/Ball & Ball/Roller types.



### BODY

There are mainly 3 body types - Aluminium with Die-Cast and gravity-cast and Cast-iron.



### MECHANICAL SEAL

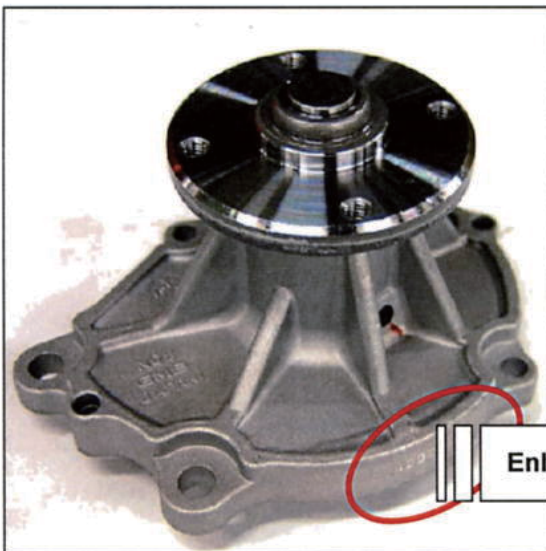
Fixed bonded to the body and rotating pressed to the spindle.



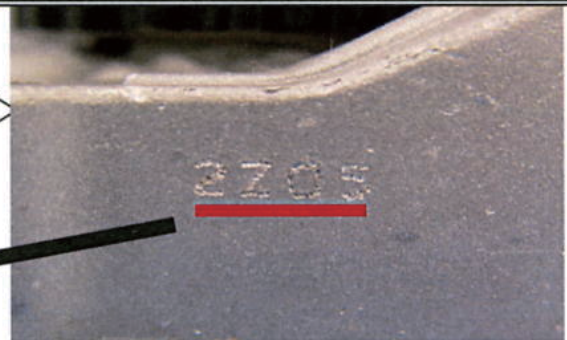
### IMPELLER

There are either pressed steel or cast-iron.

## TRACEABILITY



We manage each batch production by stamping the product date. This date is normally stamped on the body, but sometimes on the hub.



2Z05 stands for 2002.12.05  
(2:year · Z:month · 05:date)

※The months from January to September are shown by Arabic number.  
 October is shown "X". November is shown "Y". December is shown "Z".